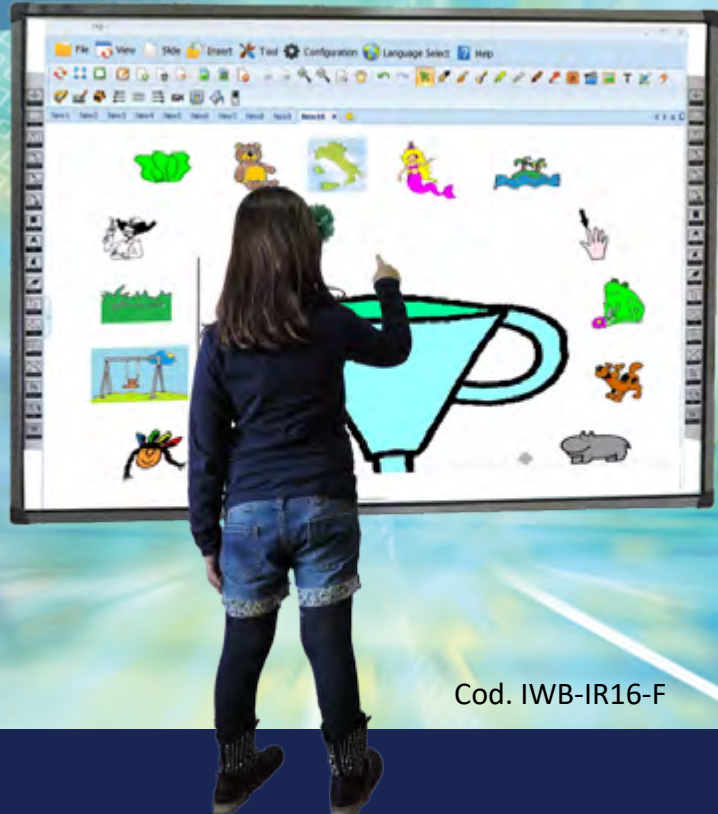


## Interactive Whiteboard - 16 touches SmartMedia Multi-Touch Infrared Series

A powerful tool  
for interactive  
learning

16 touch points, 84", 4:3 aspect ratio

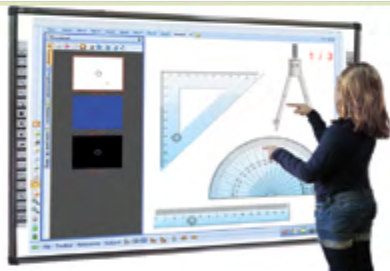


Cod. IWB-IR16-F

### WHITEBOARD FEATURES

Infrared technology, multi-touch that allows interaction with both the finger and the pen

- High resolution and precision that allows 16 users to write at the same time
- Anti-reflective erasable surface;
- Equipped with Pen Tray (Pen Tray and eraser)
- Connect via USB cable, or optionally optional wireless kit
- Possibility to add two amplified acoustic integrated speakers with 40W RMS or 60W RMS wall



### WHY CHOOSE SMARTMEDIA?

- We offer innovative products
- With the best quality and cost effective
- Reliability and variety of solutions
- Excellent service and support

### SOFTWARE FEATURES

- Includes all the features to create lessons quickly and easily
- Compatible with Windows XP, Vista, Seven, 8, 8.1, 10, Mac OS
- Import and export the .IWB format to share lessons with other brands
- Intuitive User toolbar
- Multi-language
- Writing text and drawing shapes on video
- Allows to write down on any application and save it in many formats to easily share them with the whole community of teachers (pdf, .ppt, .doc, .xls, .html, .avi, and all image formats)
- Saving and playback of everything that was written and designed

## Included Software

- Check all functions of PC or notebook and the applications
- Design perfect geometric shapes
- Save and print what has been done with the whiteboard
- Write on the applications, create notes, and highlight or enlarge portions of the screen
- Instant connectivity in real-time on camera, webcam, document camera or other digital devices and ability to annotate the video
- Distance Learning: connection in conference mode via Internet or LAN and / or wireless
- Integration with major video conferencing systems
- Support format .IWB common file format (CFF) for interactive whiteboards
- Compatible with most popular operating systems
- Multi-user with customization of the software for single user and password protection
- Automatic update of the new release of the software available
- Find online resources by using a keyword
- Export: image files (.jpg, .jpeg, .bmp, .png, .tif, .tiff, .gif), pdf, power point (.ppt, .pptx), word (.doc, .docx) excel (.xls, .xlsx), web page (.html)

Screen tool with customizable background color or with customized image.

Handwriting recognition and conversion to text (OCR), through the operating system.

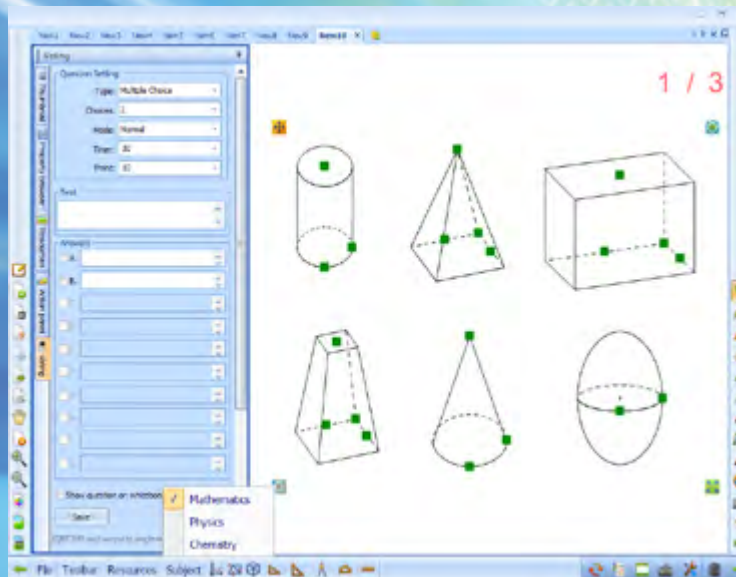
Reflector tool, available in various shapes: circle, triangle, rectangle, bow, pentagon and star with five points.

Customizable background.

Graphical interface viewable frame, window or full screen modes.

Image capture tool: the ability to import into a project an image of the entire screen to the underlying software, a rectangular region or an irregular region.

On-screen keyboard.



Recording interactive lessons including voice in .avi format.

Tool Timer / Clock: you can time the lesson or an exercise, start a countdown or display the current time.

Import multimedia files: videos, flash files, audio and images

Geometry tools: bracket 30° 45°, ruler, protractor and compass, measuring the sides and angles.

Types of pens: pencil, standard pen, brush, Bamboo pen, highlighter, pen texture, smart pen (for shape recognition) and magic pen (for recognition tool).

Mathematical formula editor

Creation of multiple files with ability to switch from one file to another without losing the work you created earlier.

Voting system: creation and visualization of tests and quizzes for SmartMedia systems responders.

Geometric shapes in 3D.

School subjects, including: mathematics, chemistry and physics.

Multimedia gallery with over 10,000 resources (learning objects) to simplify the creation of classes.

Preview the slides created.

Instant replay of what was done on the slide.

## Technical Specifications

MODEL	IWB-IR16-F
Size	84"
Dimensions	1715 x 1253 x 38 mm
Technology	Infrared
Writing method	Pen or finger
Aspect Ratio	4:3
Sensitive Area	78,5"
Max Projection Area	78,5"
Resolution	72000 x 72000
Touch points	16
Resolution by Inches	More than 200 lines
Tracking speed	57600 bps
Scan speed	< 8ms
Processing Speed	500 acquisitions per second
Energy consumption	< 2W
Connection	USB or Wi-Fi optional
Driver Compatibility	Win2000/2003/XP/Vista/Win 7/8/8.1 & 10, Mac OS, Linux
Type Pen	Without Battery
Frame	Aluminium
Surface	Erasable Steel
Weight	20 Kg
Warranty	3 years renewable for 5 years after registration on the site
Included Software	3 Pens - Eraser - Pen Tray - Wall bracket - USB cable - User Manual - IWB Software driver for whiteboard control and usage
Hotkeys	Optional



### Cl@ss Kit 2.0 SmartMedia:

- - Wifi connection
- - Interactive Whiteboard + IWB software
- - Video projector
- - Teacher
- - Student devices (Tablet, PC, Smartphone)
- - Classroom management software SmartMedia Pro for the sharing in each environment

## Accessories

### Mounting Options



- **Wall Mount for Interactive Whiteboards**

SPRE - height-adjustable by an electric motor with a remote control system and safety switch

SPRP - height-adjustable by a manual gas spring system

Both options available with an extension arm for a short-throw projector or with a support bracket for an ultra short-throw projector.

- **Mobile Stand for Interactive Whiteboards**

SRE - height-adjustable by an electric motor with a remote control and safety switch

SRP - height-adjustable by a manual gas spring system

Both options available with an extension arm for a short-throw projector or with a support bracket for an ultra short-throw projector



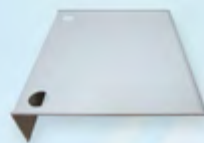
- **SBQ-UN - Universal Mobile stand for Interactive Whiteboards**

- **Laptop Security locker (ASN/ASN-P/ASN-SRE)** for notebooks with 10" to 19" displays.



- **Laptop shelf (MESRE)**

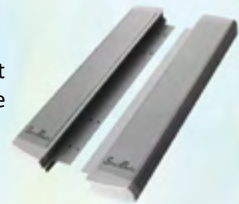
Support for a PC / Notebook, compatible with SRE and SRP



### Optional

- **One Pair Amplified Speakers (IWB-40W)**

2 x 20 watt RMS speakers mount directly to the whiteboard frame



- **Wireless Connection Device (SKQW-UN)**

Wirelessly connect from whiteboard USB to Wi-Fi 802.11b/g/n, it includes 1 LAN and 1 USB ports



- **Wireless Interactive Tablet (STW)** The wireless tablet allows the teacher to interact with the PC moving freely in the classroom.

- **Wireless Presentation System (WPS1000)** Audio/Video content distribution on Computers, IWBs, Video Projectors or Monitors and mobile devices



- **DOCUMENT CAMERA AND VISUAL PRESENTER**

Allows you to capture any image or object from a work surface, maintaining high image quality in a portable system and reduced weight



- **Voting systems** for testing and processing results with statistics and graphics with or without screen. Available Kit of 12, 24 or 32 radiofrequency responders

\* Product images are only indicative and may change at any time without prior notice..