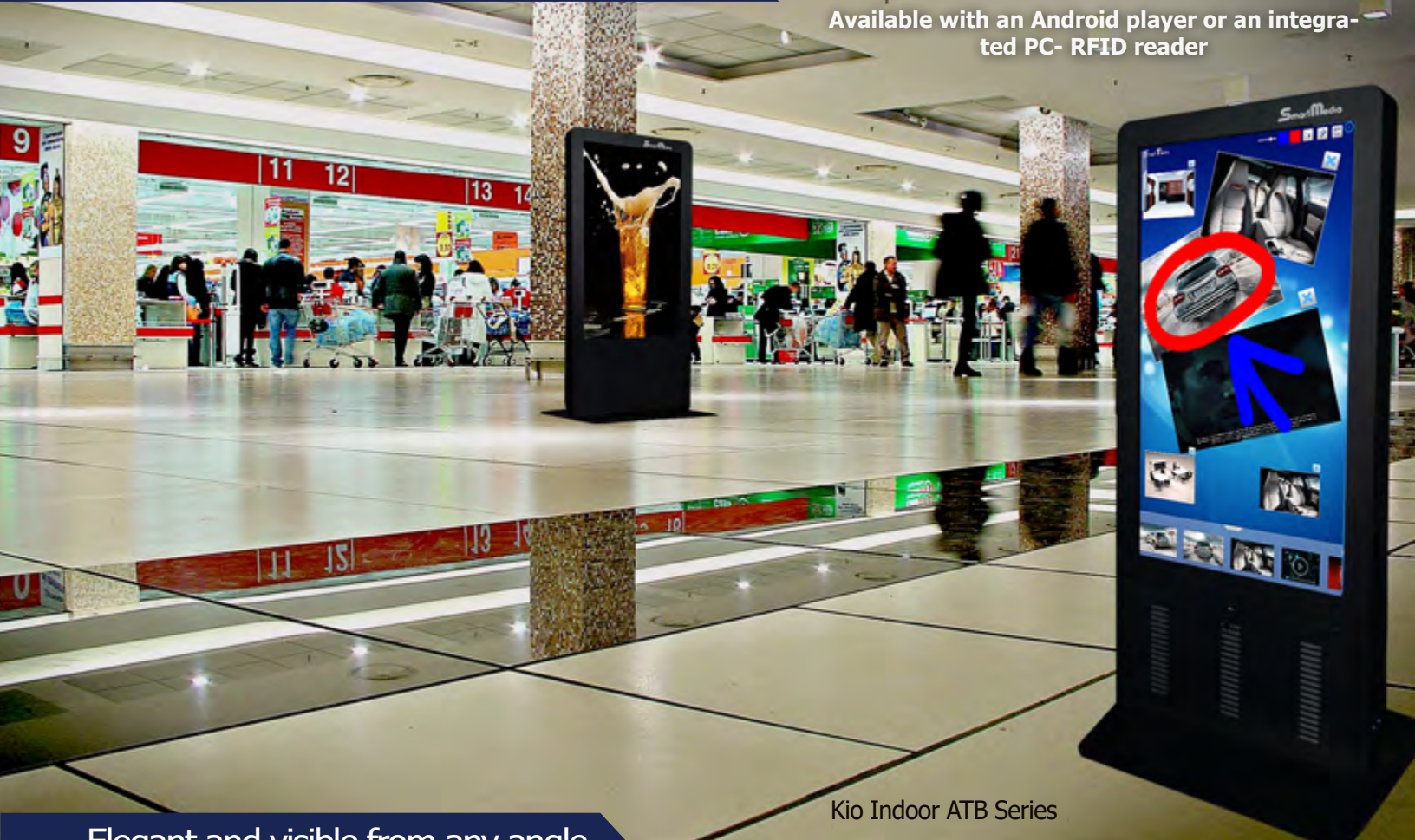


SmartMedia Interactive Kiosk Double Sided - KIO ATB Series

Available with an Android player or an integrated PC- RFID reader



Kio Indoor ATB Series

Elegant and visible from any angle

SMARTMEDIA KIO ATB

SmartMedia KIO ATB is an innovative, double-sided, interactive kiosk designed to attract and capture the attention of any user.

Equipped with multi-touch technology, the 6 touch displays respond in an intuitive way to all the new Digital Signage applications and all developed solutions to enhance information management.

Made with an elegant structure and attractive design in black and silver, it adapts to every environment and public space.

Connected to the network for Digital Signage Application remote control.

APPLICATIONS

SmartMedia KIO ATB double sided, allows interaction with multimedia content, maps, information, advertising posters, and much more.

Users can interact with the surface in an intuitive manner with their fingers, and the double screen allows the usability of the information from both sides, allowing more simultaneous users.

Intended for retail outlets, government agencies, reception areas, hotel lobbies, school entrances, banks, corporations, museums, airports, shopping malls and more.

An **RFID reader** can be included on both sides allowing simultaneous use of multiple applications.

FEATURES

- Available in two versions:
 - integrated Android Player
 - integrated i5 PC
- Ability to connect a PC via HDMI in the Android version
- Can be connected to the network for digital signage application remote control
- Safety glass protects the LED and makes it safe for public use
- Latest touch technology for accurate and reliable response
- Built-in ventilation system to keep the components at optimal temperature
- Optional wheels for easy movement



SmartTouch

Software in dotazione*



SmartTouch is the software that lets you manage multimedia content and presentation files more effectively and in a more visually engaging way on any touch-based device.

Easy to use, SmartTouch allows you to control and interact with content naturally thanks to hand gesture recognition.

SmartTouch has been designed to give you an experience much like your smartphone or tablet.

* **Not included in the Android Models**



Designed for use with touch screen monitors and with interactive kiosks and tables.

Great at info points, trade shows, museums, retail locations, shopping malls, television news studios, meeting rooms, airports, hotels, universities, schools, training centers, libraries, etc.

Amazing interaction in high definition

Using your multimedia content and the easily customized pre-loaded templates, you can create your own interactive application in just a few steps.

Prepare your projects wherever you are with the configurator, then import them into SmartTouch with a USB drive or other removable media. Real multi-touch capabilities: multiple users can explore different content at the same time.

Password-protected access to settings and to exit the software

Main Features



PHOTO, VIDEO AND AUDIO VIEWER

Allows you to visualize and manipulate photographs, videos and audio files, annotate directly over the screen, and capture and email your annotations.

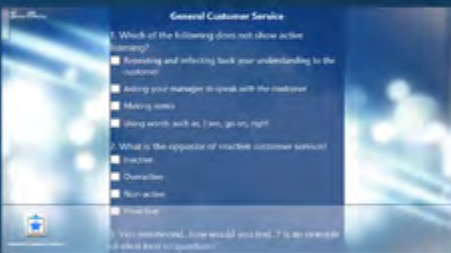


BROWSER

built-in browser that lets you browse the internet and the creation of a list (white / black) of allowed and/or not allowed websites. Possibility to display interactive maps and insert annotations directly on the screen which can also be captured and sent by e-mail.

JIGSAW PUZZLE

This app simulates a classic jigsaw puzzle to entertain in a fun way! Users can turn any image they desire into a puzzle.



QUIZ BUILDER

Create and manage custom quizzes for educational or entertainment purposes.

PDF AND MICROSOFT WORD, EXCEL AND POWER POINT FILE VIEWER

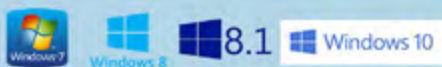
Lets you visualize the selected file and zoom in or out on all or part of the document, annotate directly over the screen, and capture and email your annotations.



FORM

Enter the requested information, including e-mail address, on the form; attach any file you want (e.g. brochures, data sheets, images, screenshots, etc.), and the app will send it to the specified e-mail address automatically.

Compatibility



Minimum requirements: 7-inch Tablet with WIndows 8.1 or Desktop PC with WIndows 7 / 8 / 8.1 or Windows 10

Technical Specifications

Model	KIO-32AT-B	KIO-42AT-B	KIO-46AT-B	KIO-55AT-B
Display	LED	LED	LED	LED
Number of Displays	2	2	2	2
Diagonal	32"	42"	46"	55"
Base dimensions (L x W x H)	24" x 3" x 23.6"	27.5" x 2.1" x 21.6"	29.7" x 2.1" x 21.6"	33.54" x 2.1 x 21.6"
Body dimensions(L x W x H)	21.6" x 66.1" x 9"	27.5" x 72.1" x 18,5	29.7" x 76" x 7.2"	33.5" x 76" x 7.2"
Total dimensions (L x W x H)	24" x 69.2" x 23.6"	27.5" x 74.3" x 21.6"	29.7" x 76" x 21.6"	33.5" x 78.2" x 21.6"
Full HD Resolution	1920x1080	1920x1080	1920x1080	1920x1080
Colors	16.7 M	16.7 M	16.7 M	16.7 M
Technology	Infrared	Infrared	Infrared	Infrared
Number of touches	6	6	6	6
Response Time	3 ms	3 ms	3 ms	3 ms
Cursor speed	300 dots/s	300 dots/s	300 dots/s	300 dots/s
Touch Resolution	4096x4096	4096x4096	4096x4096	4096x4096
Update frequency	120Hz	120Hz	120Hz	120Hz
Built-in speakers	4 x 5W	4 x 5W	4 x 5W	4 x 5W
Power cord	220V Single Phase	220V Single Phase	220V Single Phase	220V Single Phase
Connectivity	Input HDMI, LAN, Wi-Fi			
Integrated Android Player	Android 4.2, Dual-core, 1GB RAM, 8GB Internal memory	Android 4.4, Quad-core, 1GB RAM, 8GB Internal memory		
Optional integrated PC *	Ability to add one or two I5 PC's, 4GB RAM, 500 GB HDD - Hardware Features customized upon request			
RFID reader	No	Both sides	Both sides	Both sides
Weight	Approximately 128 lbs	Approximately 138 lbs	Approximately 148 lbs	Approximately 158 lbs
*The addition of the integrated PC replaces the Android player				

Ready for use with Digital Signage applications

Optional Accessories

- Wheels available to allow the kiosk to be easily moved on most finished surfaces.

The image represents the combination of standard colors; other models upon request. Ask for information about customization and delivery times.

